

R 12 W

R 11 W

R 10W

R 9 W

# WHEELER COUNTY

T 24 N

T 24 N

T 23 N

T 23 N

T 22 N

T 22 N

T 21 N

T 21 N

281

Cummingsvile

70

281

Bartlett

**PLAT 24**  
16-21-12W

Ericson

91

70

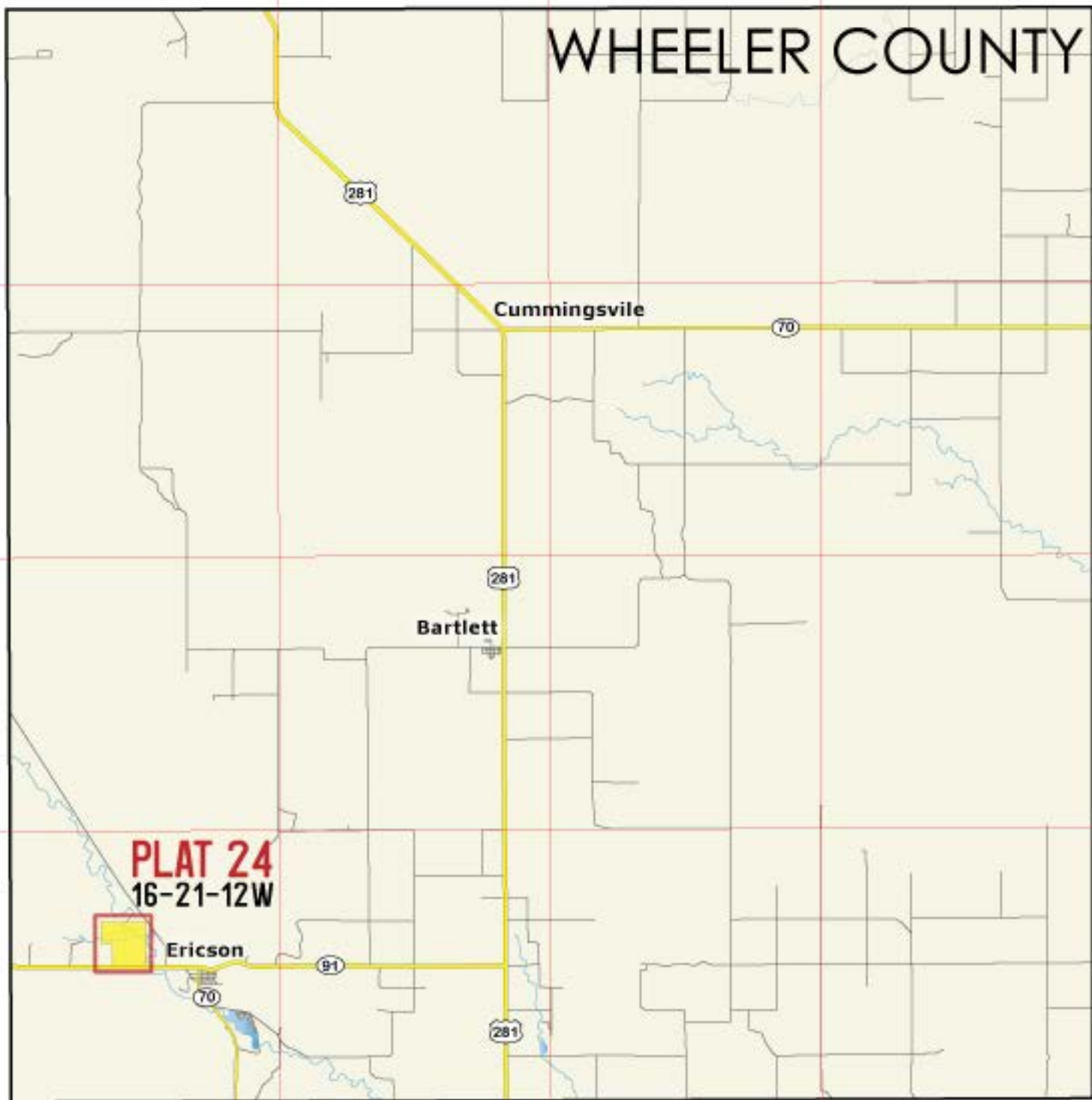
281

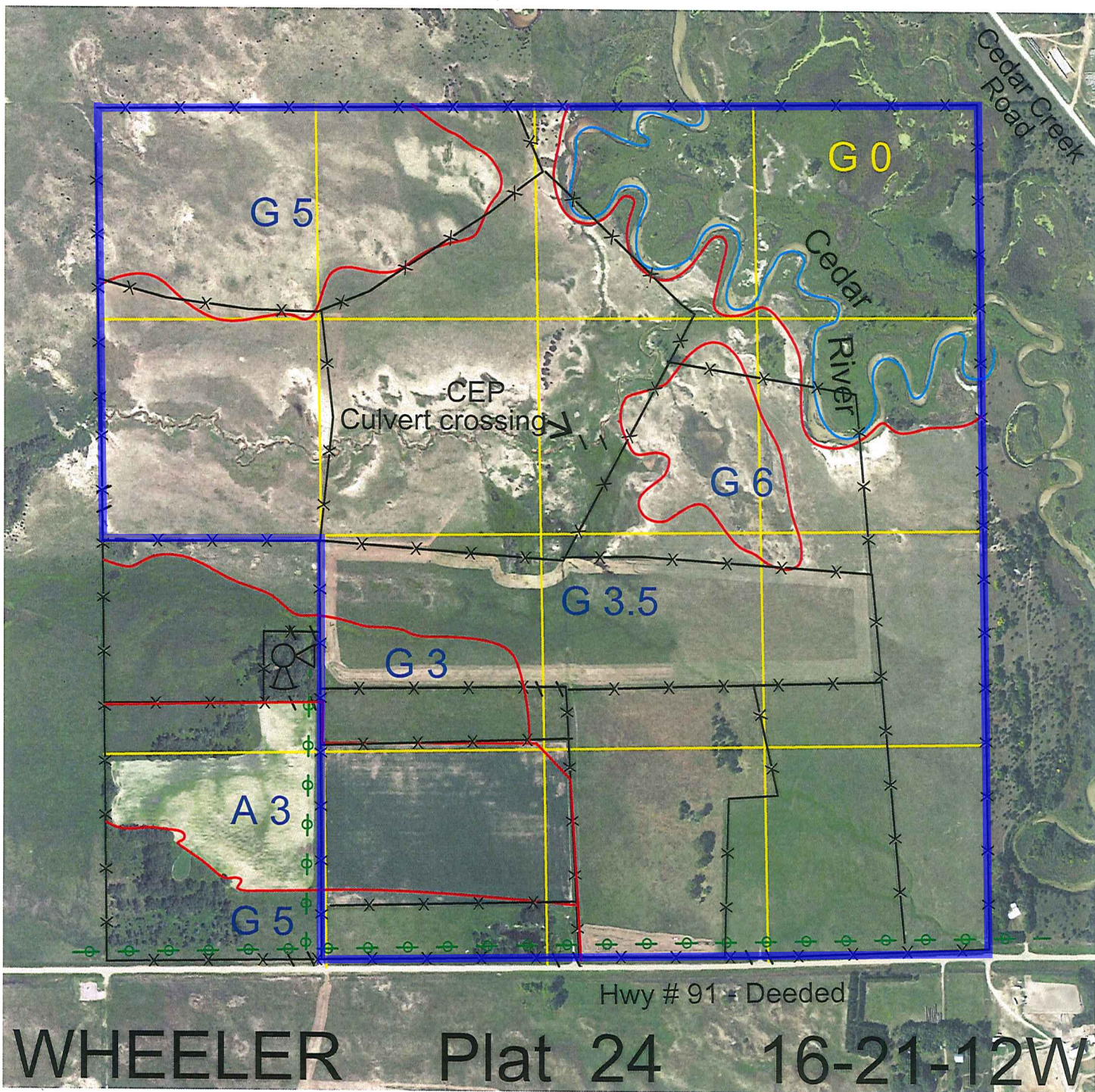
R 12 W

R 11 W

R 10W

R 9 W





# WHEELER Plat 24 16-21-12W

| <u>Legal</u>  | <u>Lease #</u> | <u>Expiration</u> | <u>Acres</u> |
|---|----------------|-------------------|--------------|
| E2, NW4, E2SW4 except 3.503 acres of Hwy #91 along the south boundary | 109712-18      | 12/31/2018        | 556.497      |

**Location:** 2 miles west of Ericson, NE.

**Best Access:** Hwy #91 on the south.