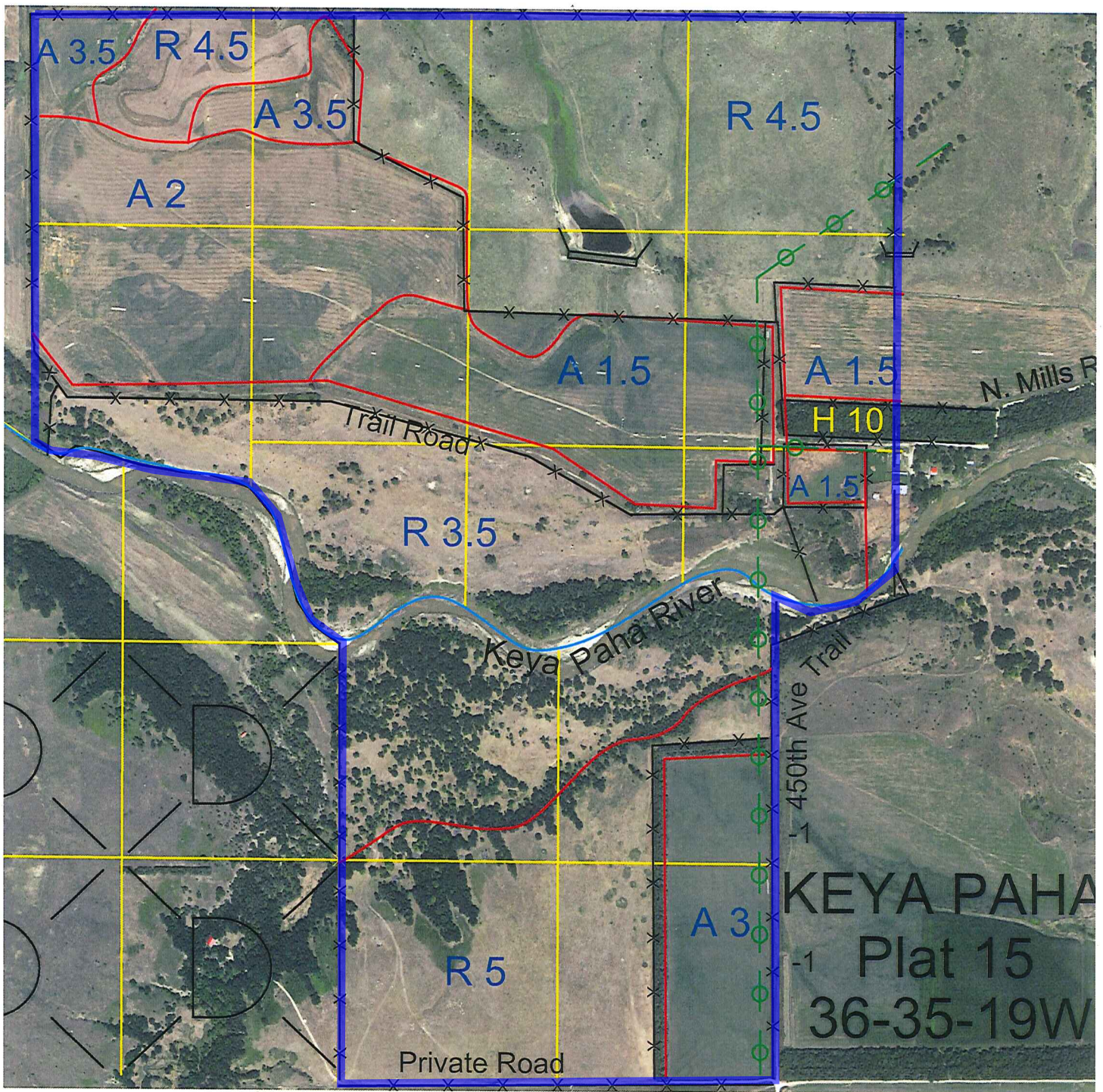




**PLAT 15**  
36-35-19W



KEYA PAHA COUNTY



Legal

Lease #

Expiration

Acres

NE4, S2SE4, N2NW4, SE4NW4 and Lots  
1, 2, 5, 6, 7 and 8 and all accretions  
thereto

110264-18

12/31/2018

575.58

Total Section Acres 575.58

**Location:** 4 miles northwest of Mills, NE on the Keya Paha River.

**Best Access:** County road to the headquarters on the east.