

R 8 W

R 7 W

R 6 W

R 5 W

NUCKOLLS COUNTY

T 4 N

T 4 N

Lawrence

4

4

T 3 N

T 3 N

14

Nelson

Oak

T 2 N

T 2 N

Nora

136

Ruskin

T 1 N

T 1 N

136

14

Superior

PLAT 2
36-1-7W

8

Hardy

R 8 W

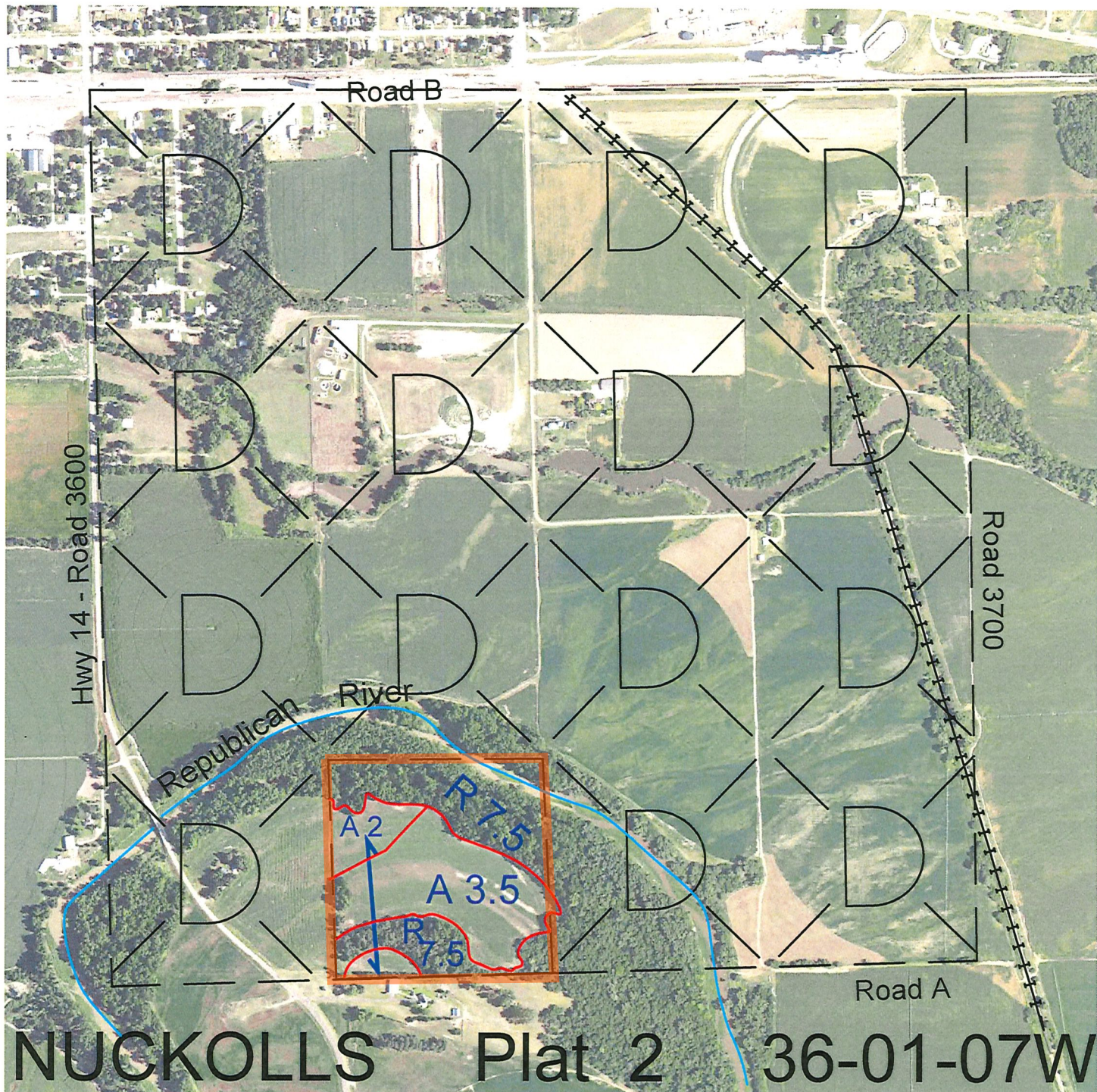
R 7 W

R 6 W

R 5 W

STIPULATIONS (SPECIAL LEASE PROVISIONS) FOR NUCKOLLS #2:

The Board may terminate this Lease, in whole or in part, prior to its scheduled expiration date by 1) giving at least nine (9) months' notice of termination to the Lessee, or 2) giving written notice of termination to the Lessee stating that the lease shall terminate on December 31st of the year notice was given. In the event of such early termination, any bonus paid for this Lease will be partially refunded. The unused percentage of the original lease term shall be multiplied by the bonus previously paid to determine the refund amount.



<u>Legal</u>	<u>Lease #</u>	<u>Expiration</u>	<u>Acres</u>
SE4SW4	112787-23	12/31/2023	40

Total Section Acres 40

Location: 1/2 mile south of Superior, NE, adjacent to the Republican River.

Best Access: No public access. Must travel into Kansas then across private land to get to lease.

Land Classification Codes: >D< indicates land not owned by the School Land Trust

- | | | | |
|---|---|----|--|
| A | Dryland Croppground | M | Pivot Irrigated Croppground
(Trust owned well) |
| B | Special Land Class | NU | Non-Utility (No Value) |
| C | Water for Livestock | P | Pivot Irrigated Croppground
(Lessee owned well) |
| E | Enhanced Value | R | Grassland (Typical Rent) |
| F | Gravity Irrigated Croppground
(Trust owned well) | S | Grassland (Lower Rent
than R Classification) |
| G | Grassland (Higher Rent
than R classification) | T | Real Estate Tax Recapture |
| H | Non-Agricultural Land Class | W | Gravity Irrigated Croppground
(Lessee owned well) |
| I | Canal Irrigated Croppground | | |

For further information, please call Field Representative: Chris Kozisek at (402) 367-0260.

Plat # 2