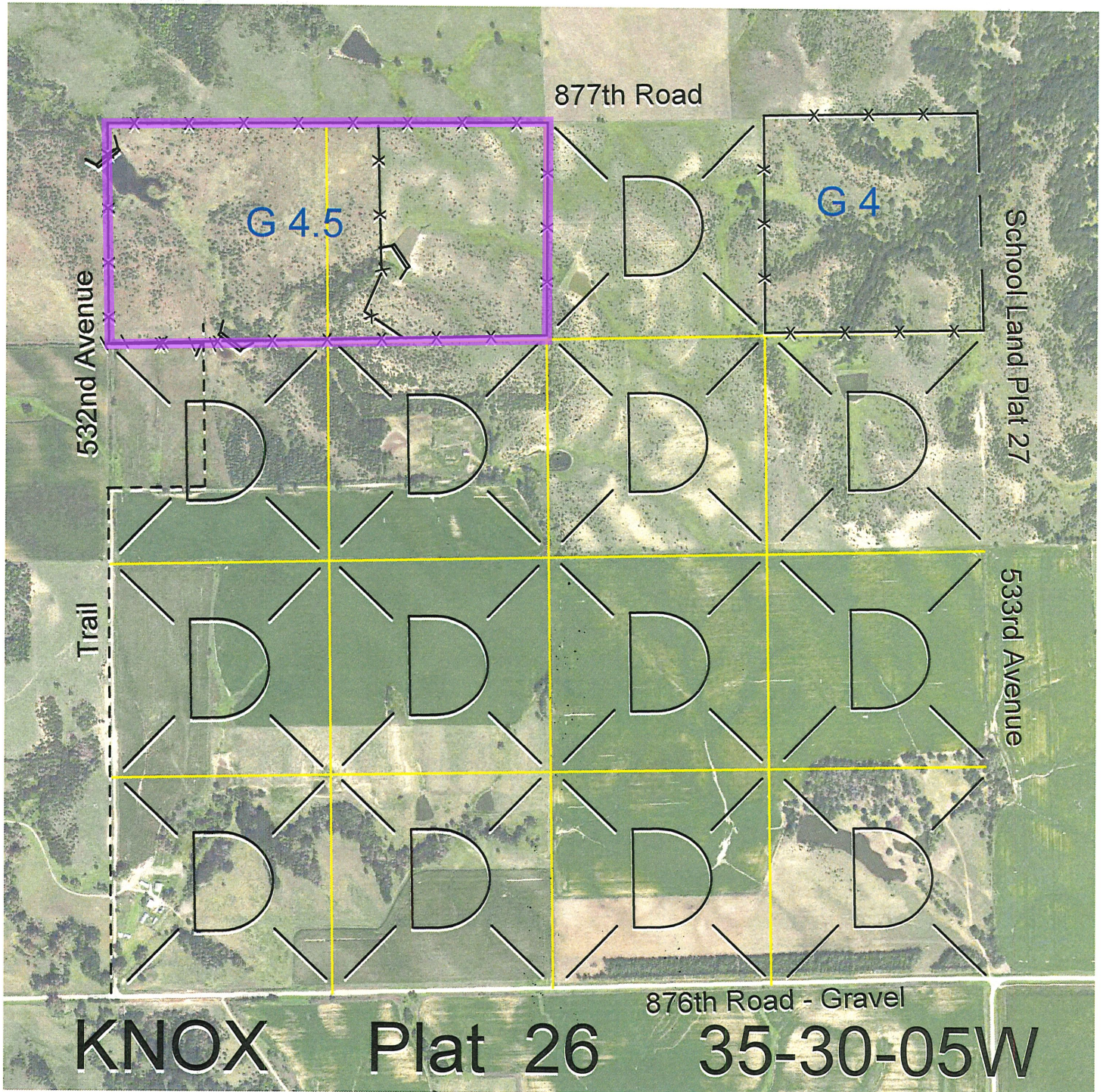


STIPULATIONS (SPECIAL LEASE PROVISIONS) FOR KNOX #26a:

Notwithstanding the noxious weed control provisions provided in the body of this Lease, the following stipulation shall apply regarding noxious weeds: The Board will supply the chemicals necessary to treat the noxious weeds on all of the grassland covered by this Lease, and provide detailed instructions for the chemical application. However, if the Board or its representative determines at any time, in their sole and absolute discretion, that the noxious weed problems are due to inaction or neglect on the part of the Lessee, then Lessee will furnish, at Lessee's sole and exclusive cost and expense, all chemical and the labor and equipment necessary to apply the chemicals and will apply the chemicals timely and in exact accordance with the instructions provided by the Board. Lessee will also effectively control, to the Board's satisfaction, the noxious weeds on any cropland covered by this Lease at Lessee's sole and exclusive cost and expense at all times during the term of this Lease. When necessary to apply the recommended chemical, the Lessee will provide a NE Department of Agriculture Pesticide Applicator ID number or contract with a commercial applicator to apply the chemical at Lessee's expense.



<u>S-T-R</u>	<u>Legal</u>	<u>Lease #</u>	<u>Expiration</u>	<u>Plat #</u>	<u>Acres</u>
35-30-05	NE4NE4	112252-24	12/31/2024	26	40
36-30-05	NW4 and W2NE4			27	240
Total Lease Acres					280
35-30-05	N2NW4	112294-24	12/31/2024	26	80
Total Lease Acres					80
Total Section Acres					120

Location: Approximately 4 miles northeast of Creighton, NE.

Best Access: Trail road from south to southwest corner or over school land from east.

Land Classification Codes: >D< indicates land not owned by the School Land Trust

A	Dryland Cropland	M	Pivot Irrigated Cropland (Trust owned well)
B	Special Land Class	NU	Non-Utility (No Value)
C	Water for Livestock	P	Pivot Irrigated Cropland (Lessee owned well)
E	Enhanced Value	R	Grassland (Typical Rent)
F	Gravity Irrigated Cropland (Trust owned well)	S	Grassland (Lower Rent than R Classification)
G	Grassland (Higher Rent than R classification)	T	Real Estate Tax Recapture
H	Non-Agricultural Land Class	W	Gravity Irrigated Cropland (Lessee owned well)
I	Canal Irrigated Cropland		

For further information, please call Field Representative: Tad Judge at (402) 340-6744.

Plat # 26