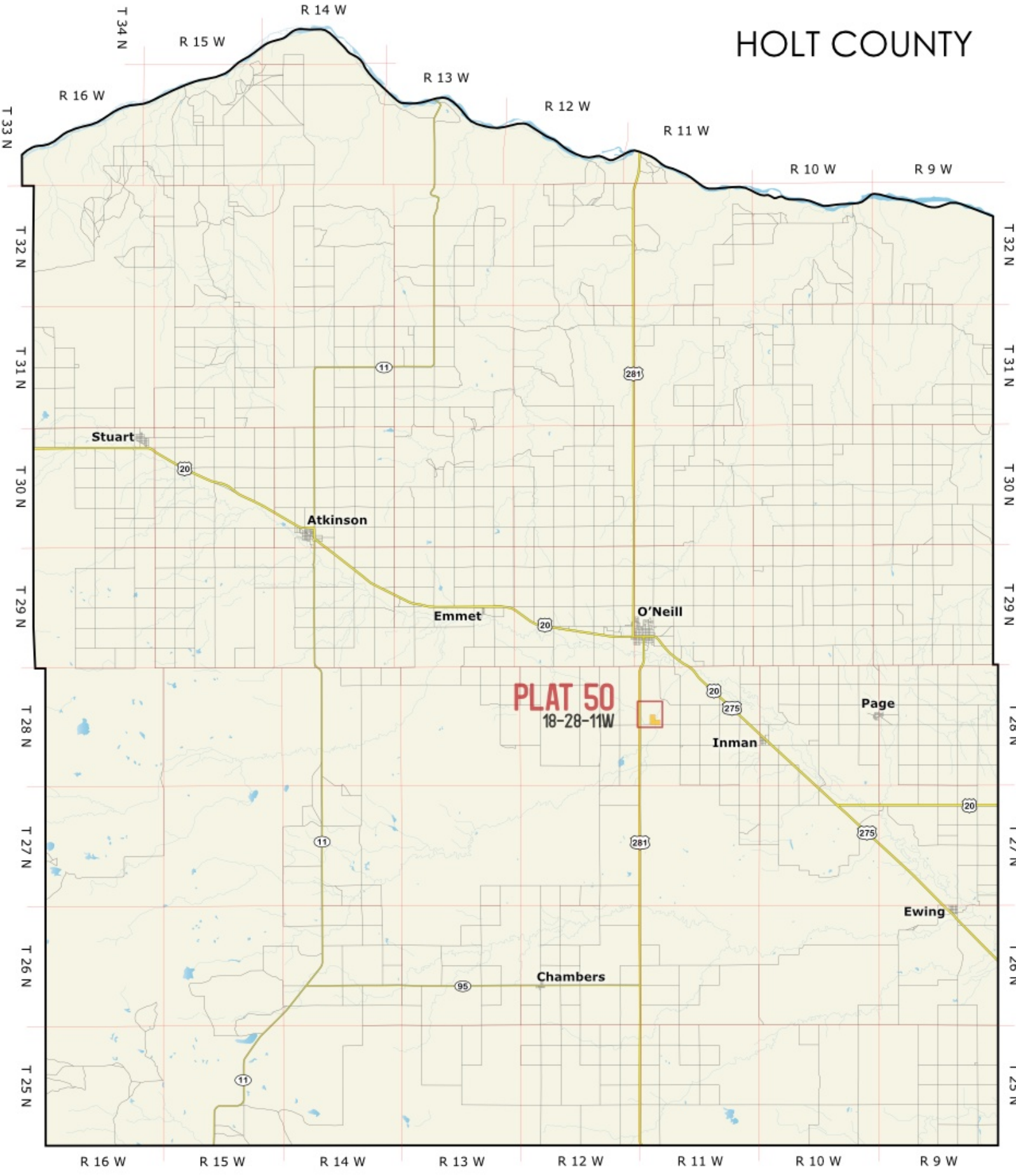
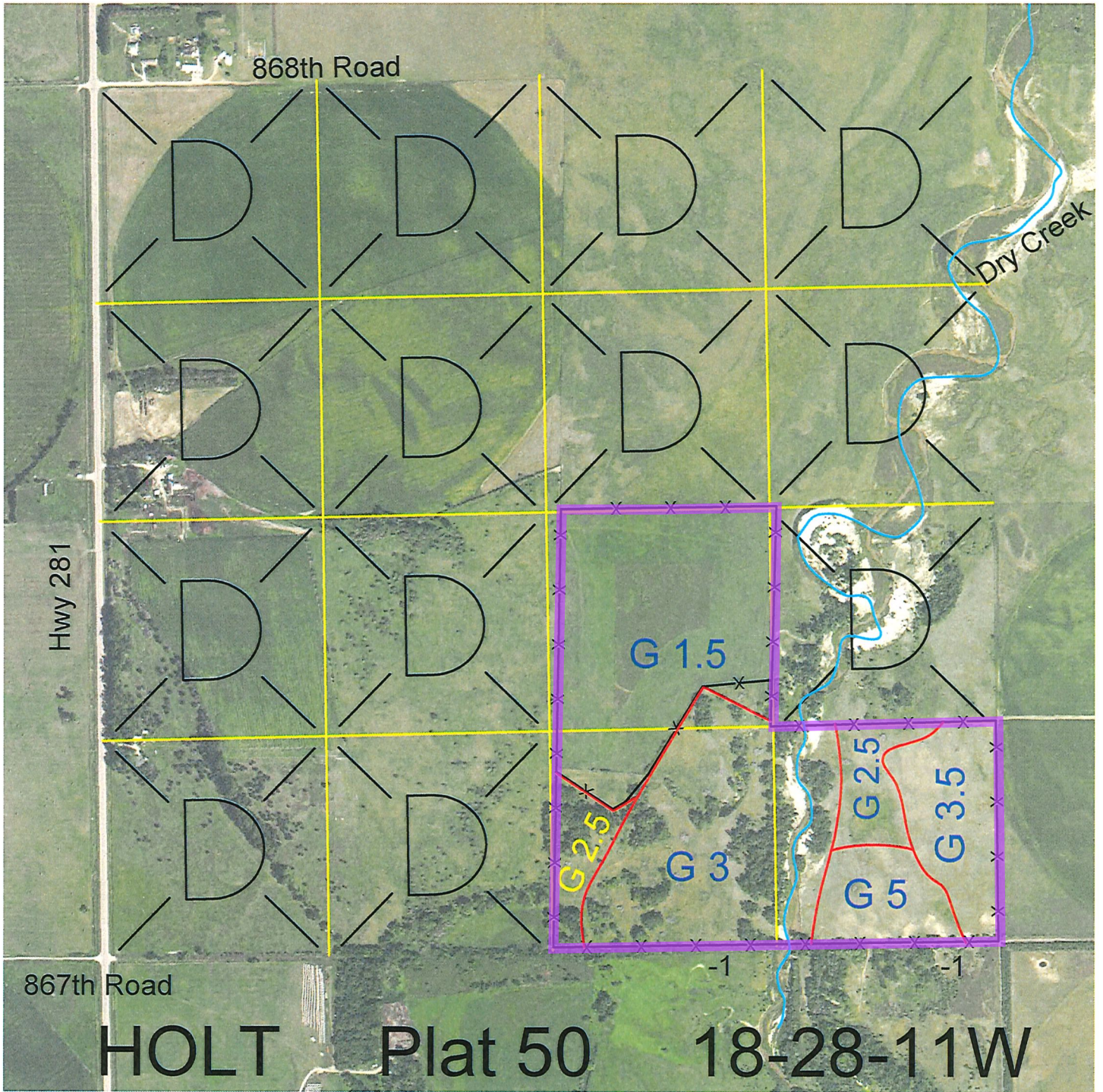


HOLT COUNTY





Legal	Lease #	Expiration	Acres
W2SE4 and SE4SE4	112746-24	12/31/2024	120

Total Section Acres **120**

Location: Approximately 3.5 miles south of O'Neill, NE.

Best Access: Trail road on south line.

Land Classification Codes: >D< indicates land not owned by the School Land Trust

A	Dryland Cropground	M	Pivot Irrigated Cropground (Trust owned well)
B	Special Land Class	NU	Non-Utility (No Value)
C	Water for Livestock	P	Pivot Irrigated Cropground (Lessee owned well)
E	Enhanced Value	R	Grassland (Typical Rent)
F	Gravity Irrigated Cropground (Trust owned well)	S	Grassland (Lower Rent than R Classification)
G	Grassland (Higher Rent than R classification)	T	Real Estate Tax Recapture
H	Non-Agricultural Land Class	W	Gravity Irrigated Cropground (Lessee owned well)
I	Canal Irrigated Cropground		

For further information, please call Field Representative: Tad Judge at (402) 340-6744.

Plat # 50