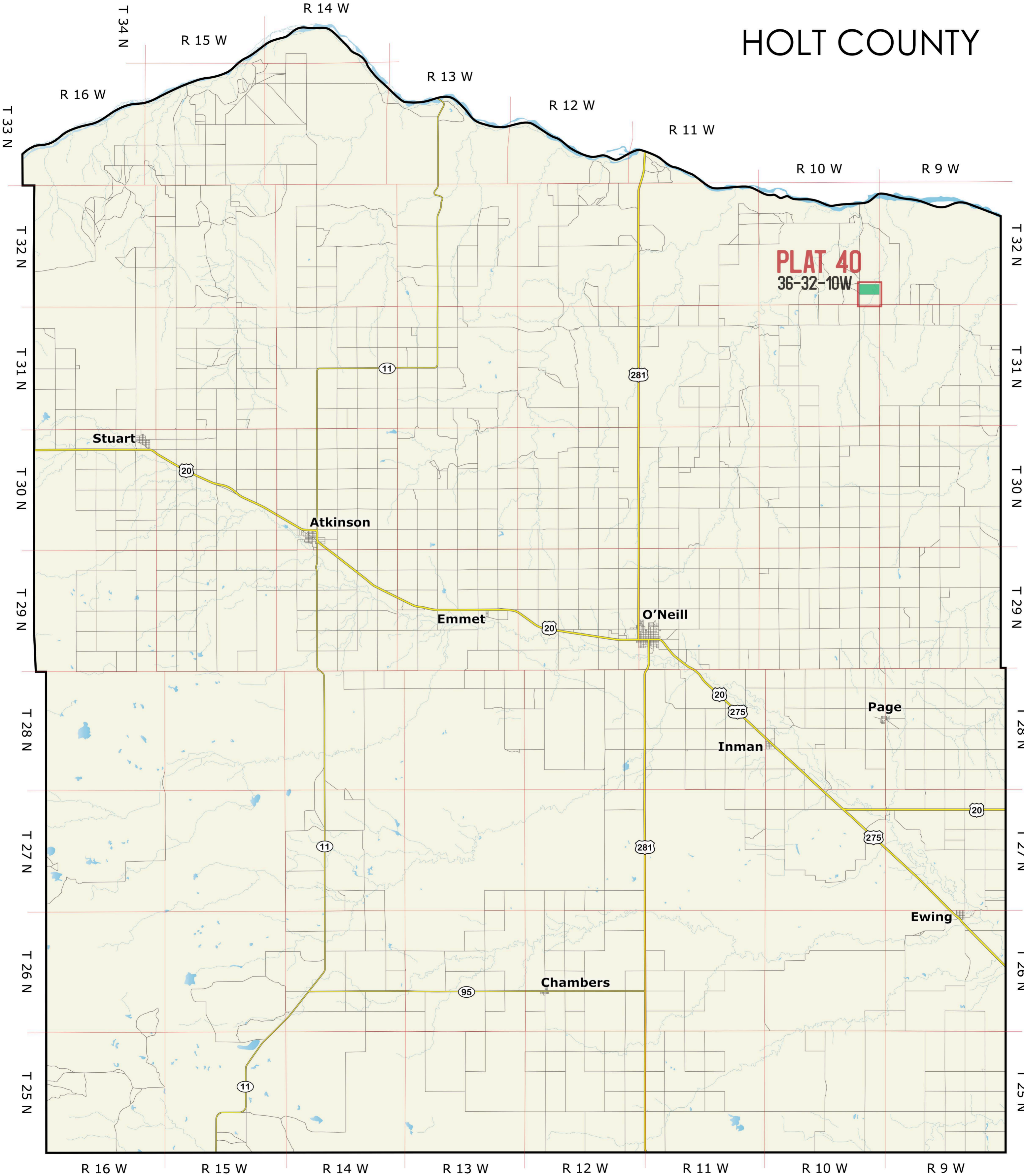
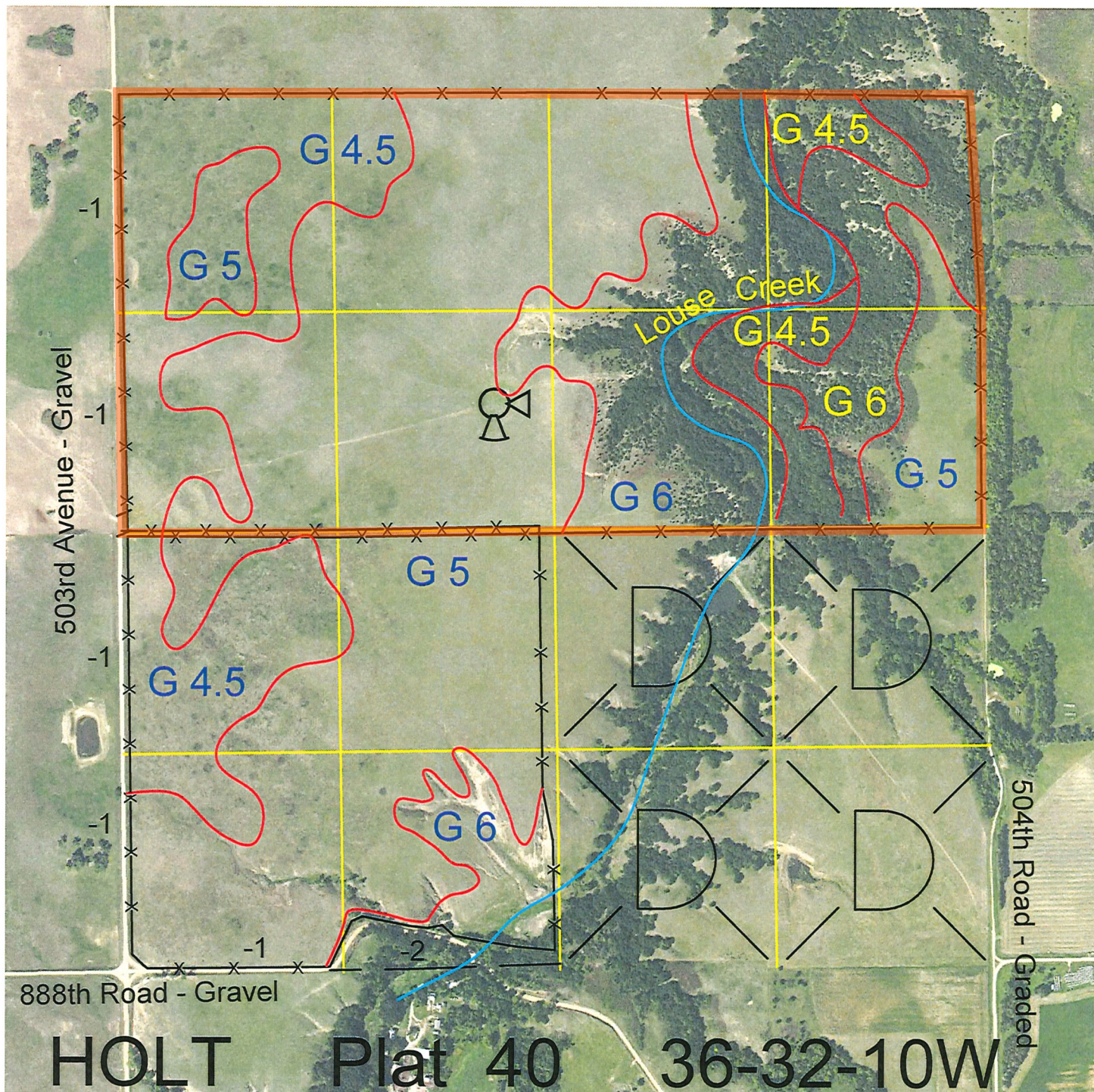


# HOLT COUNTY





<u>Legal</u>	<u>Lease #</u>	<u>Expiration</u>	<u>Acres</u>
N2	111774-23	12/31/2023	320
SW4	111773-23	12/31/2023	160
<b>Total Section Acres</b>			<b>480</b>

**Location:** Approximately 1.5 miles east and 8.5 miles south of Lynch, NE.

**Best Access:** 503rd Avenue on the west.

**Land Classification Codes:** >D< indicates land not owned by the School Land Trust

A	Dryland Croppground	M	Pivot Irrigated Croppground (Trust owned well)
B	Special Land Class	NU	Non-Utility (No Value)
C	Water for Livestock	P	Pivot Irrigated Croppground (Lessee owned well)
E	Enhanced Value	R	Grassland (Typical Rent)
F	Gravity Irrigated Croppground (Trust owned well)	S	Grassland (Lower Rent than R Classification)
G	Grassland (Higher Rent than R classification)	T	Real Estate Tax Recapture
H	Non-Agricultural Land Class	W	Gravity Irrigated Croppground (Lessee owned well)
I	Canal Irrigated Croppground		

For further information, please call Field Representative: Tad Judge at (402) 340-6744.

Plat # 40