

GREELEY COUNTY

R 12 W

R 11 W

R 10 W

R 9 W

T 20 N

T 20 N

T 19 N

T 19 N

T 18 N

T 18 N

T 17 N

T 17 N

R 12 W

R 11 W

R 10 W

R 9 W

PLAT 16B

16-19-12W



Spalding

Greeley Center

Scotia

Wolbach

91

91

281

56

281

22

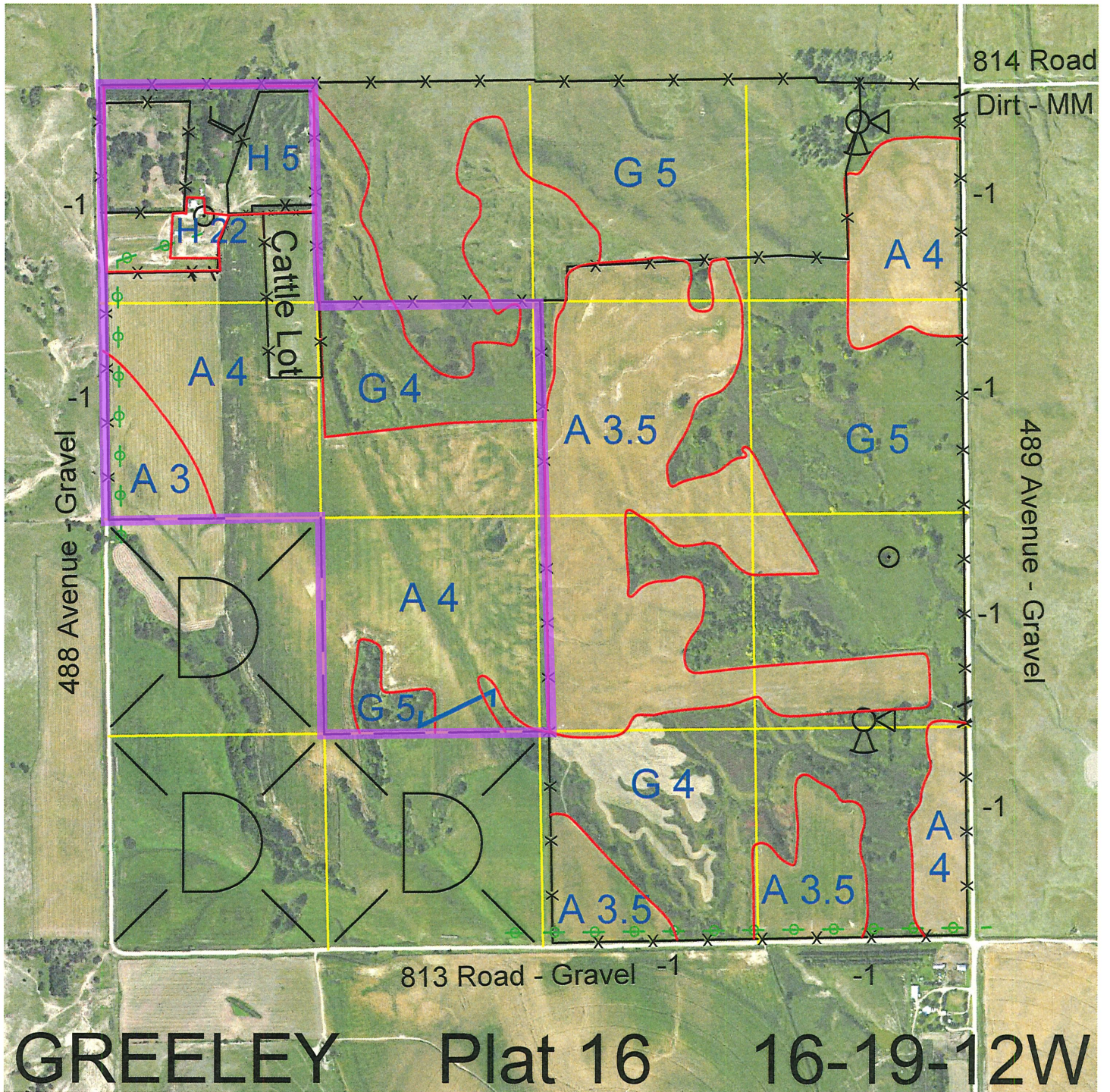
281

22

11

STIPULATIONS (SPECIAL LEASE PROVISIONS) FOR GREELEY #16b:

Notwithstanding the noxious weed control provisions provided in the body of this Lease, the following stipulation shall apply regarding noxious weeds: The Board will supply the chemicals necessary to treat the noxious weeds on all of the grassland covered by this Lease, and provide detailed instructions for the chemical application. However, if the Board or its representative determines at any time, in their sole and absolute discretion, that the noxious weed problems are due to inaction or neglect on the part of the Lessee, then Lessee will furnish, at Lessee's sole and exclusive cost and expense, all chemical and the labor and equipment necessary to apply the chemicals and will apply the chemicals timely and in exact accordance with the instructions provided by the Board. Lessee will also effectively control, to the Board's satisfaction, the noxious weeds on any cropland covered by this Lease at Lessee's sole and exclusive cost and expense at all times during the term of this Lease. When necessary to apply the recommended chemical, the Lessee will provide a NE Department of Agriculture Pesticide Applicator ID number or contract with a commercial applicator to apply the chemical at Lessee's expense.



<u>Legal</u>	<u>Lease #</u>	<u>Expiration</u>	<u>Acres</u>
E2 and NE4NW4	112698-24	12/31/2024	360
W2NW4, SE4NW4 and NE4SW4	112699-24	12/31/2024	160
Total Section Acres			520

Location: 9 miles west and 5 miles north of Greeley, NE.

Best Access: County roads on east (489 Avenue), west (488 Avenue) and south (813 Road).

Land Classification Codes:

>D< indicates land not owned by the School Land Trust

A	Dryland Croppground	M	Pivot Irrigated Croppground (Trust owned well)
B	Special Land Class	NU	Non-Utility (No Value)
C	Water for Livestock	P	Pivot Irrigated Croppground (Lessee owned well)
E	Enhanced Value	R	Grassland (Typical Rent)
F	Gravity Irrigated Croppground (Trust owned well)	S	Grassland (Lower Rent than R Classification)
G	Grassland (Higher Rent than R classification)	T	Real Estate Tax Recapture
H	Non-Agricultural Land Class	W	Gravity Irrigated Croppground (Lessee owned well)
I	Canal Irrigated Croppground		

For further information, please call Field Representative: Chris Kozisek at (402) 367-0260.

Plat # 16