

R 16 W

R 15 W

R 14 W

R 13 W

R 12 W

R 11 W

R 10 W

T 35 N

T 35 N

T 34 N

T 34 N

T 33 N

T 33 N

Naper

Anoka

Gross

Butte

Spencer

Bristow

Lynch

Monowi

PLAT 44

36-34-15W

R 14 W

R 15 W

R 13 W

R 12 W

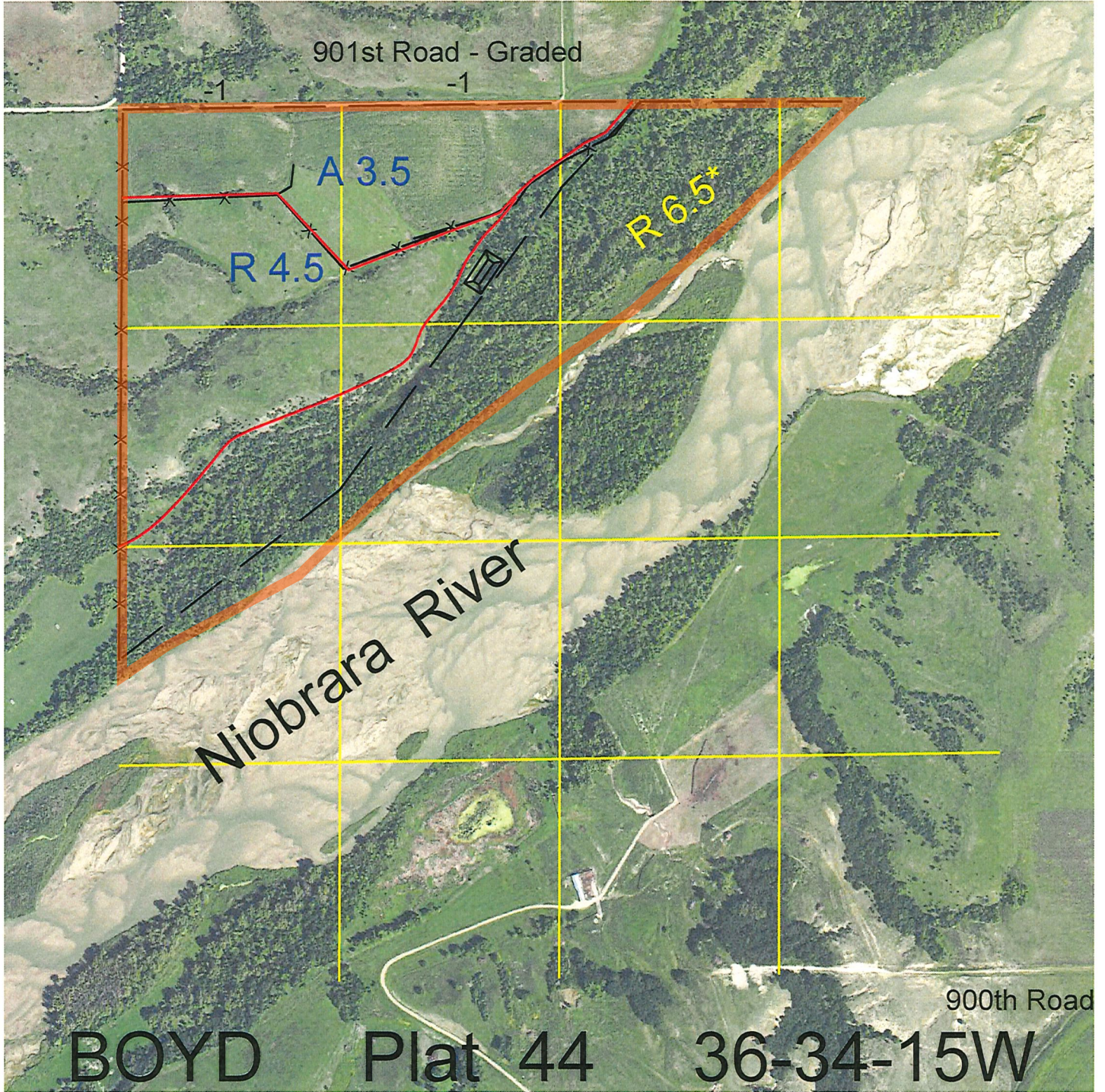
R 11 W

R 10 W

R 9 W

BOYD COUNTY

T 32 N



<u>Legal</u>	<u>Lease #</u>	<u>Expiration</u>	<u>Acres</u>
Government Lots 1 and 2 and all accretions thereto and NW4NW4	111959-23	12/31/2023	129.97

Total Section Acres 129.97

Location: Approximately 5 miles south and 3 miles east of Naper, NE.

Best Access: County road (901st Road) on north.

Land Classification Codes: >D< indicates land not owned by the School Land Trust

A	Dryland Cropground	M	Pivot Irrigated Cropground (Trust owned well)
B	Special Land Class	NU	Non-Utility (No Value)
C	Water for Livestock	P	Pivot Irrigated Cropground (Lessee owned well)
E	Enhanced Value	R	Grassland (Typical Rent)
F	Gravity Irrigated Cropground (Trust owned well)	S	Grassland (Lower Rent than R Classification)
G	Grassland (Higher Rent than R classification)	T	Real Estate Tax Recapture
H	Non-Agricultural Land Class	W	Gravity Irrigated Cropground (Lessee owned well)
I	Canal Irrigated Cropground		

For further information, please call Field Representative: Tad Judge at (402) 340-6744.

Plat # 44