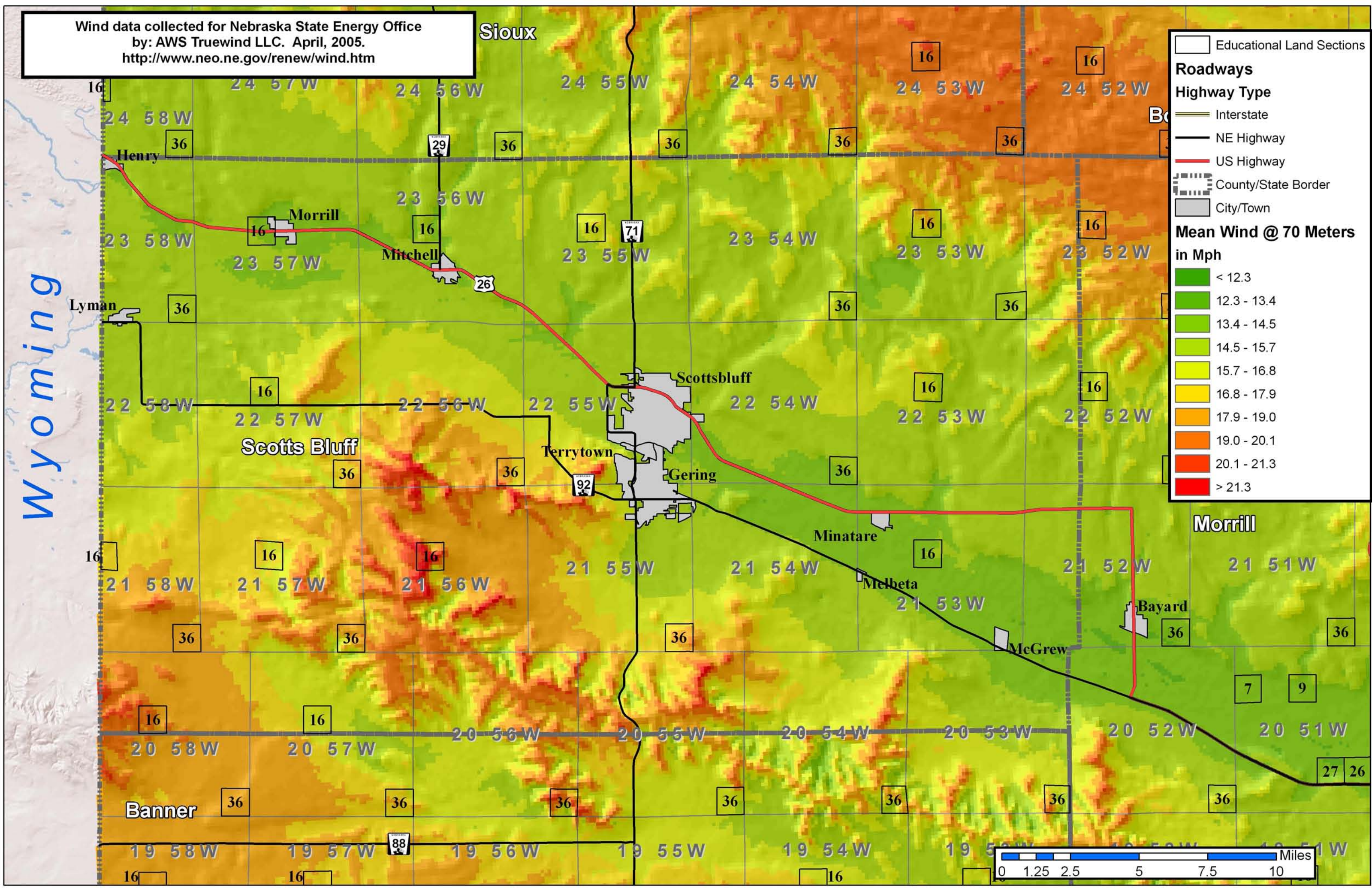


Wind data collected for Nebraska State Energy Office
by: AWS Truewind LLC. April, 2005.
<http://www.neo.ne.gov/renew/wind.htm>

Sioux

Legend

- Educational Land Sections
- Roadways
 - Highway Type
 - Interstate
 - NE Highway
 - US Highway
 - County/State Border
 - City/Town
- Mean Wind @ 70 Meters in Mph
 - < 12.3
 - 12.3 - 13.4
 - 13.4 - 14.5
 - 14.5 - 15.7
 - 15.7 - 16.8
 - 16.8 - 17.9
 - 17.9 - 19.0
 - 19.0 - 20.1
 - 20.1 - 21.3
 - > 21.3



Wyoming

