

Wind data collected for Nebraska State Energy Office  
by: AWS Truewind LLC. April, 2005.  
<http://www.neo.ne.gov/renew/wind.htm>

**Educational Land Sections**

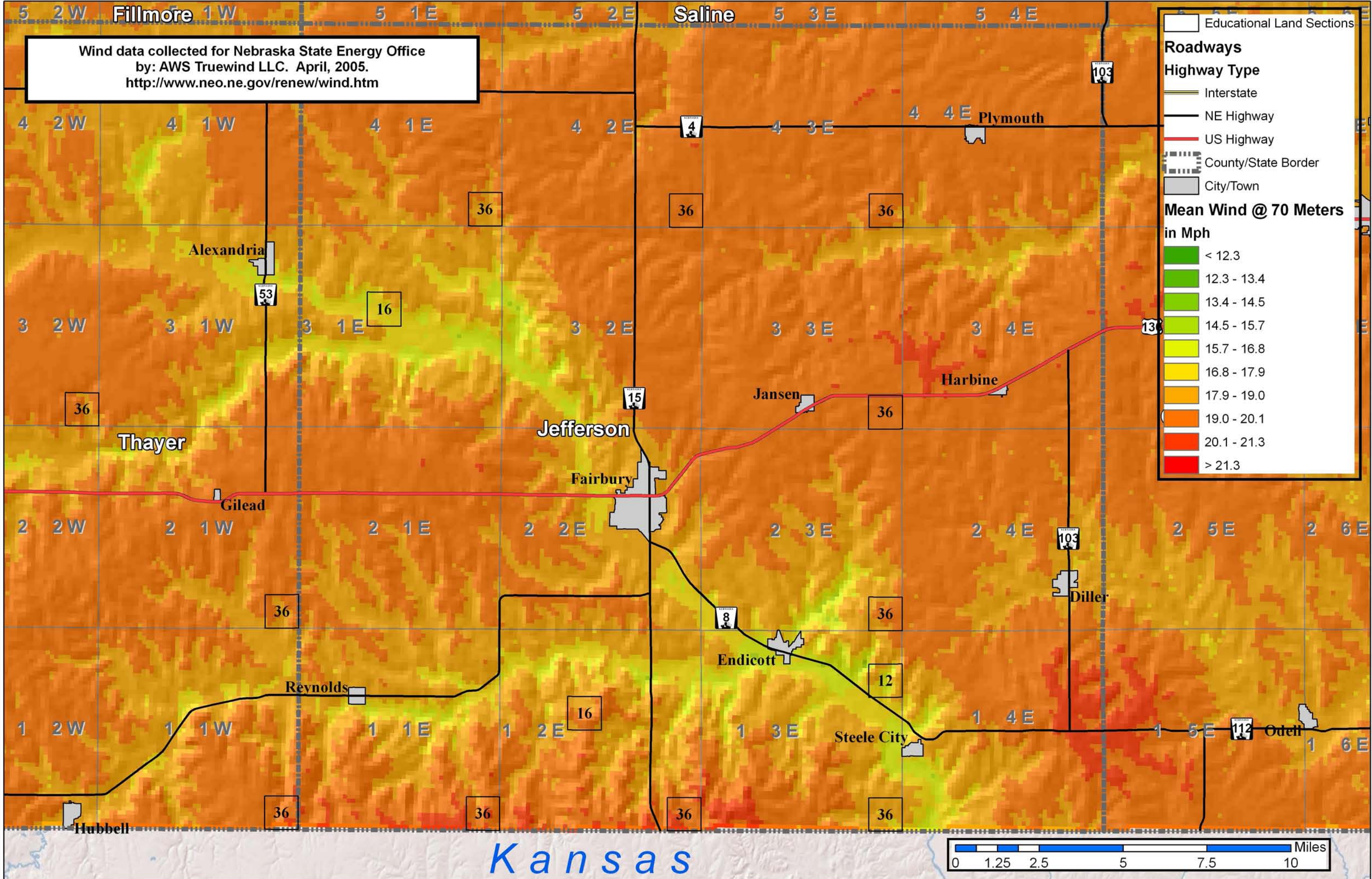
**Roadways**

**Highway Type**

- Interstate
- NE Highway
- US Highway
- County/State Border
- City/Town

**Mean Wind @ 70 Meters in Mph**

< 12.3
12.3 - 13.4
13.4 - 14.5
14.5 - 15.7
15.7 - 16.8
16.8 - 17.9
17.9 - 19.0
19.0 - 20.1
20.1 - 21.3
> 21.3



Kansas

