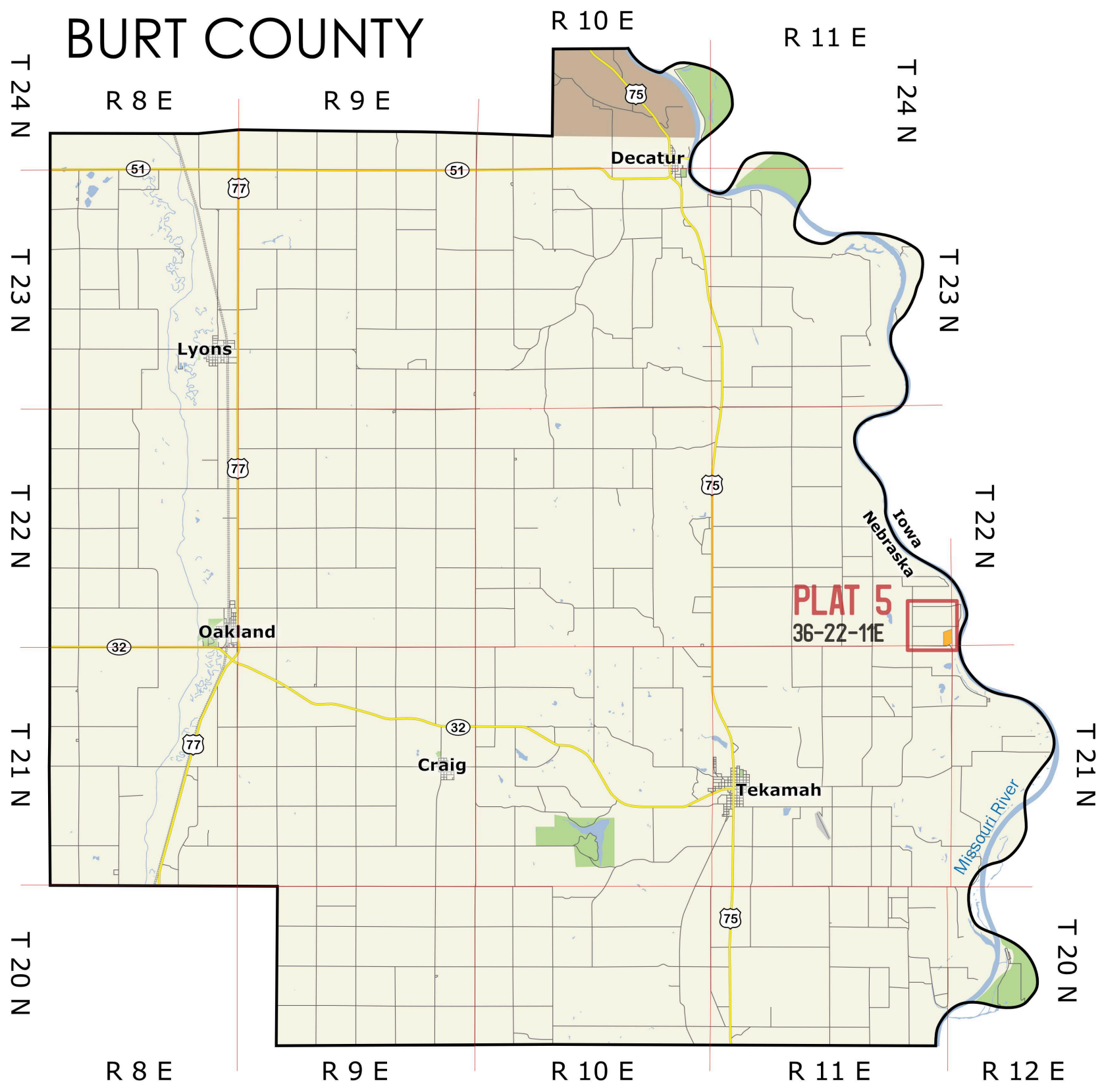
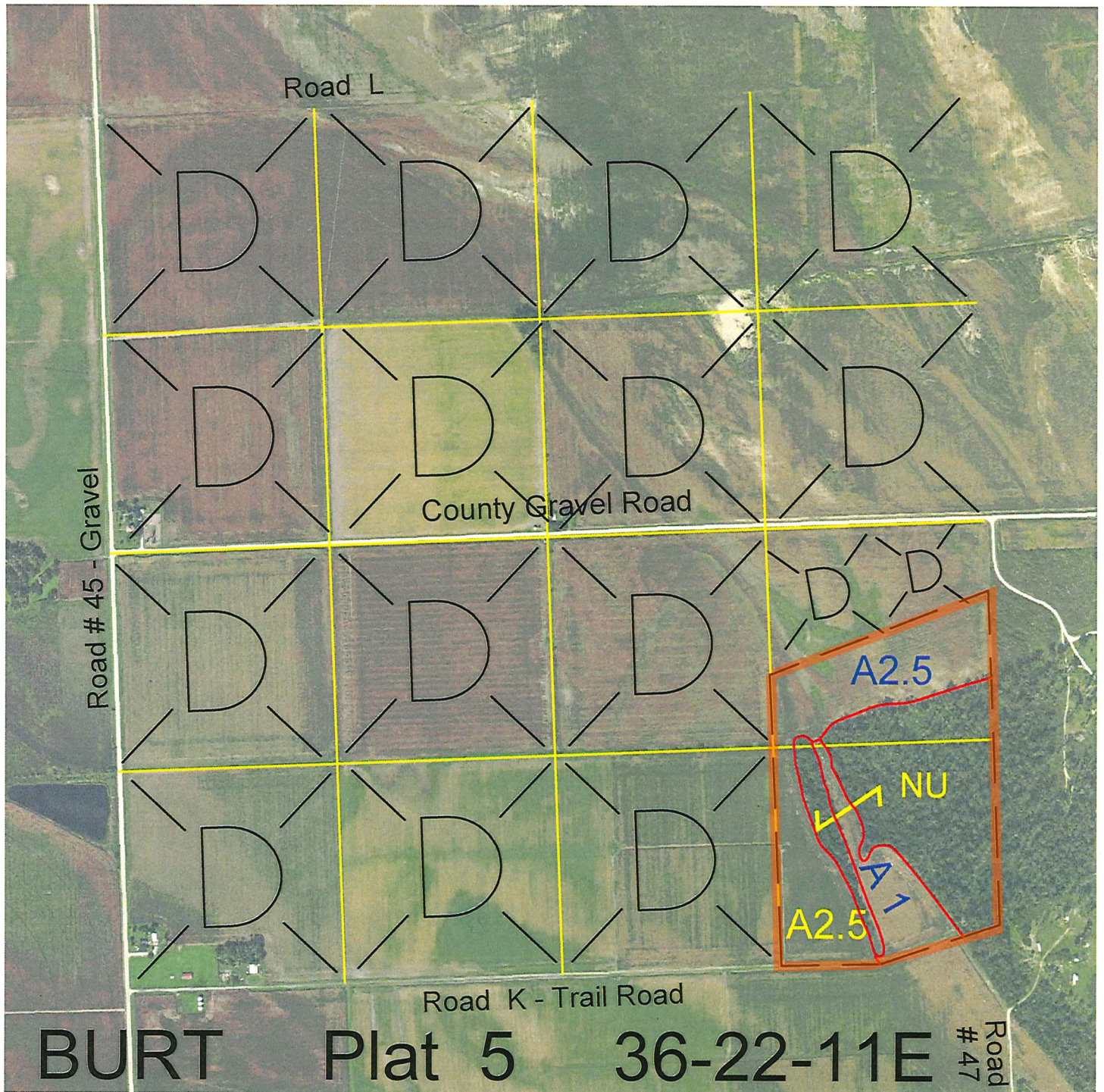


BURT COUNTY





<u>Legal</u>	<u>Lease #</u>	<u>Expiration</u>	<u>Acres</u>
Part of E2SE4 and certain former accretions thereto	113133-23	12/31/2023	59.20

Total Section Acres 59.20

Location: 4 miles north and 5 miles east of Tekamah, NE.

Best Access: Trail road (Road K) on the south of the section.

Land Classification Codes: >D< indicates land not owned by the School Land Trust

A	Dryland Croppground	M	Pivot Irrigated Croppground (Trust owned well)
B	Special Land Class	NU	Non-Utility (No Value)
C	Water for Livestock	P	Pivot Irrigated Croppground (Lessee owned well)
E	Enhanced Value	R	Grassland (Typical Rent)
F	Gravity Irrigated Croppground (Trust owned well)	S	Grassland (Lower Rent than R Classification)
G	Grassland (Higher Rent than R classification)	T	Real Estate Tax Recapture
H	Non-Agricultural Land Class	W	Gravity Irrigated Croppground (Lessee owned well)
I	Canal Irrigated Croppground		

For further information, please call Field Representative: Chris Kozisek at (402) 367-0260.

Plat # 5