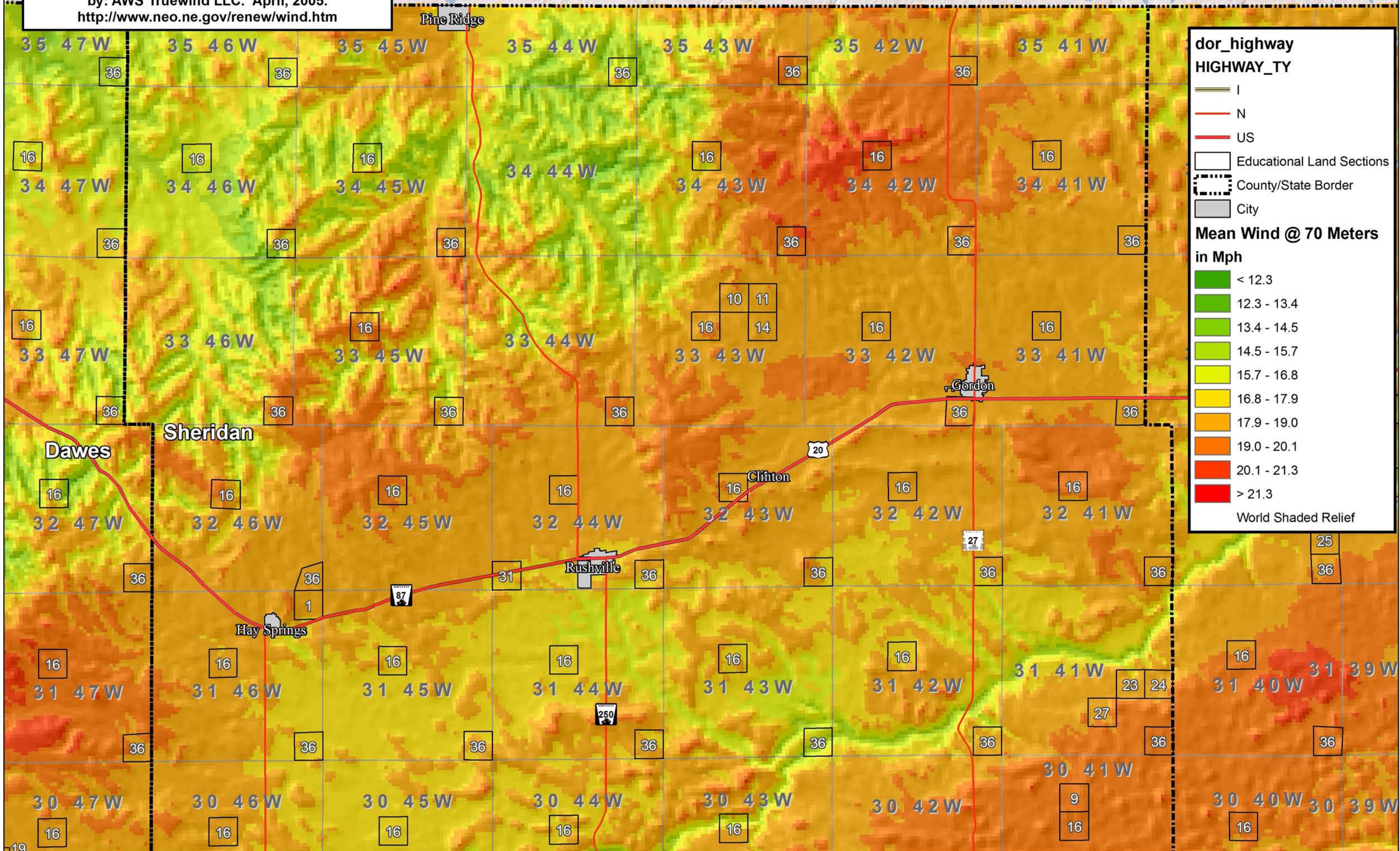
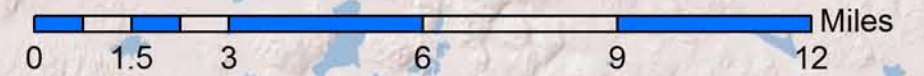


Wind data collected for Nebraska State Energy Office
by: AWS Truewind LLC. April, 2005.
<http://www.neo.ne.gov/renew/wind.htm>

South Dakota



dor_highway
HIGHWAY_TY

- I
- N
- US
- Educational Land Sections
- County/State Border
- City

**Mean Wind @ 70 Meters
in Mph**

- < 12.3
- 12.3 - 13.4
- 13.4 - 14.5
- 14.5 - 15.7
- 15.7 - 16.8
- 16.8 - 17.9
- 17.9 - 19.0
- 19.0 - 20.1
- 20.1 - 21.3
- > 21.3

World Shaded Relief