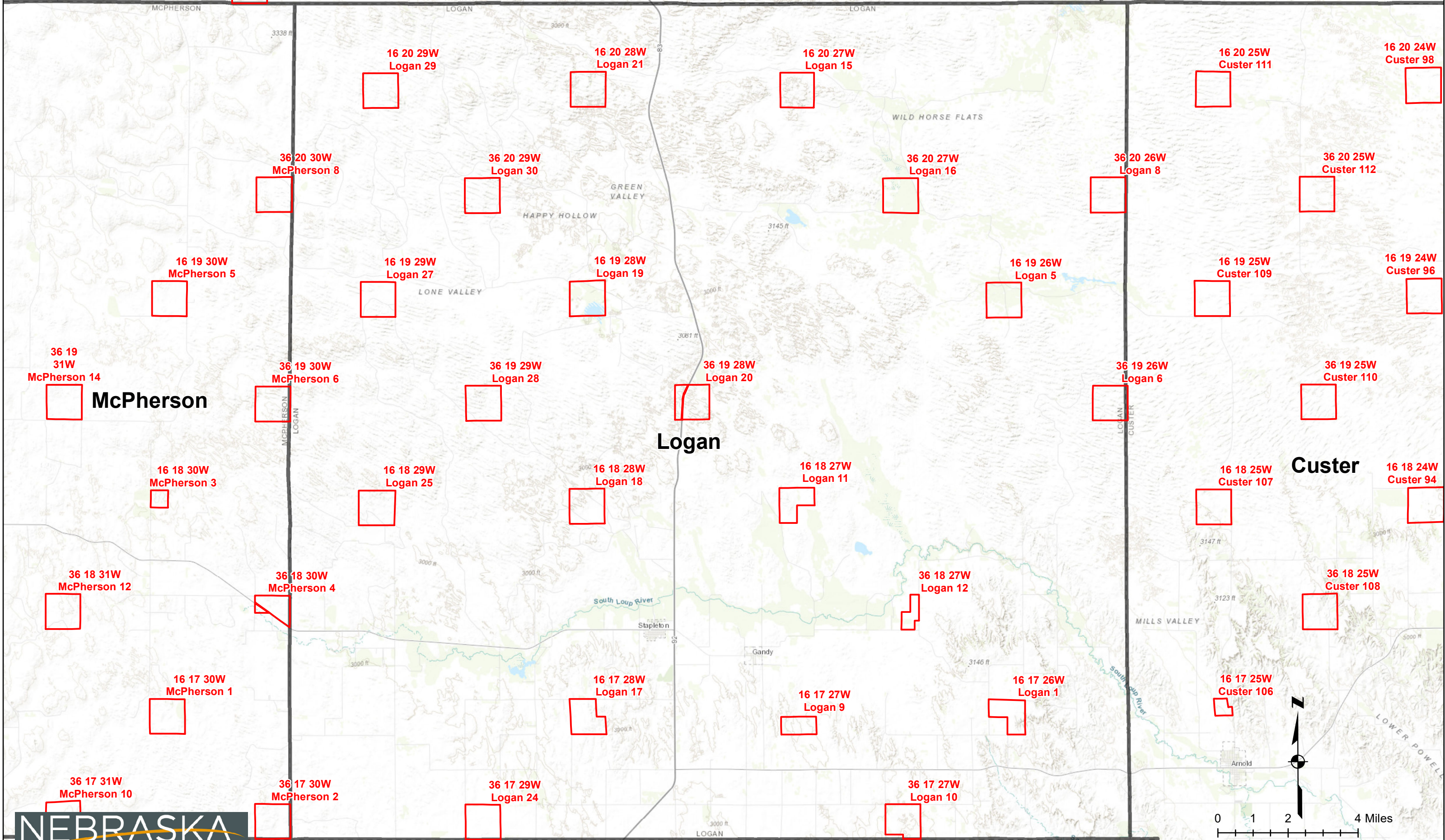


Hooker

36 21 30W  
Thomas 34

Thomas

Blaine



NEBRASKA

Board of Educational Lands & Funds

Lincoln

Sources: Esri, HERE, Garmin, Intermap, increment P Corp., GEBCO, USGS, FAO, NPS, NRCAN, GeoBase, IGN, Kadaster NL, Ordnance Survey, Esri Japan, METI, Esri China (Hong Kong), (c) OpenStreetMap contributors, and the GIS User Community

