

Lancaster

Otoe

36 07 08E
Lancaster 13

16 06 12E
Johnson 5

16 05 09E
Johnson 1

Johnson

Nemaha

30 05 10E
Johnson 3

36 05 12E
Nemaha 1

16 04 10E
Johnson 2

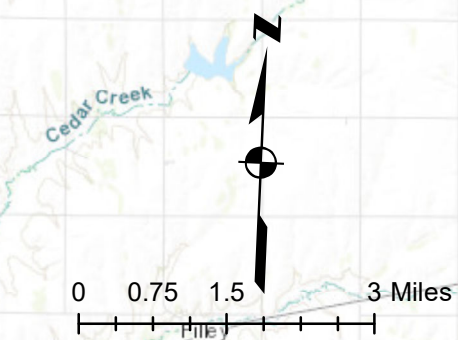
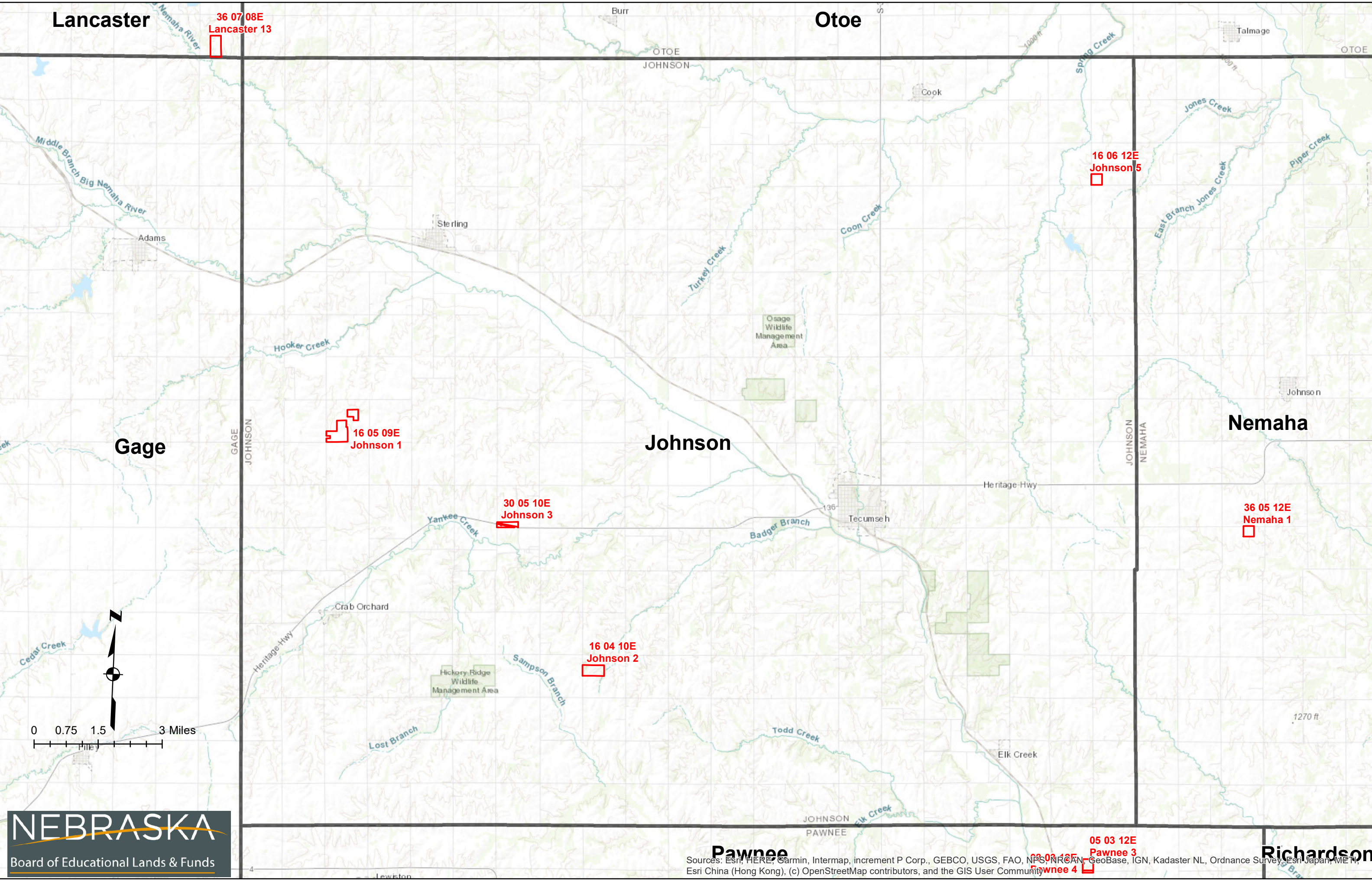
05 03 12E
Pawnee 3

08 03 12E
Pawnee 4

Richardson

Pawnee

Sources: Esri, HERE, Garmin, Intermap, increment P Corp., GEBCO, USGS, FAO, NPS, NRCAN, GeoBase, IGN, Kadaster NL, Ordnance Survey, Esri Japan, METI, Esri China (Hong Kong), (c) OpenStreetMap contributors, and the GIS User Community



NEBRASKA
Board of Educational Lands & Funds